

respons[®]600c

Work automation in perfection



Member of the respons[®]c-line

DiaSys. Total confidence in patient results.

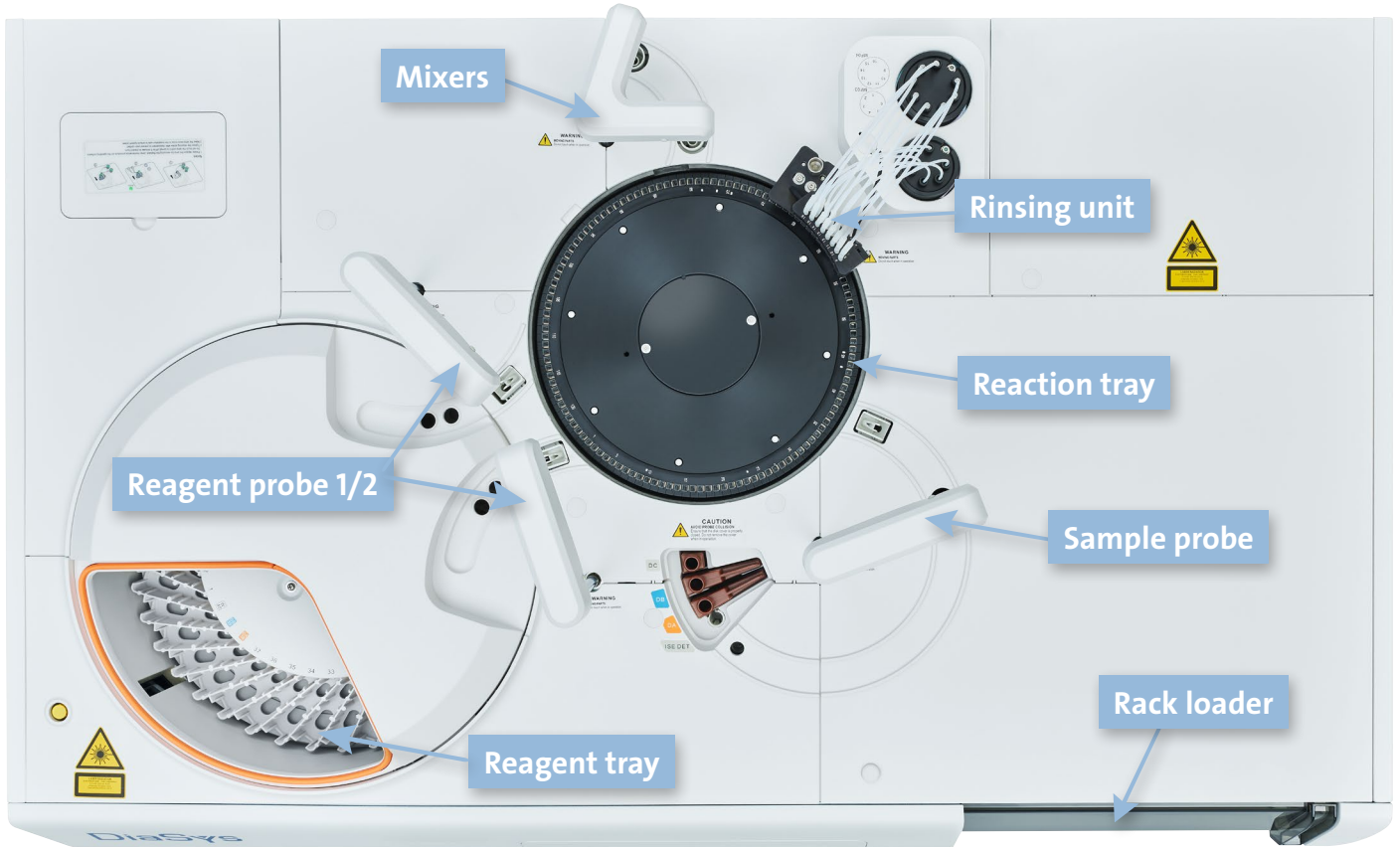
DiaSys

Diagnostic Systems



CHOOSING QUALITY.

respons[®]600c at a glance

respons[®]600c is a fully automated random access analyzer designed to deliver efficient and reliable performance in medium sized laboratories. With a constant throughput of up to 600 tests per hour (800 tests/hour incl. ISE) this compact system is capable of handling demanding workloads. Featuring a flexible rack loader holding up to 120 samples, low reaction volumes, a maintenance-free photometer and intuitive software, respons[®]600c offers optimal cost-effectiveness and ease of use.



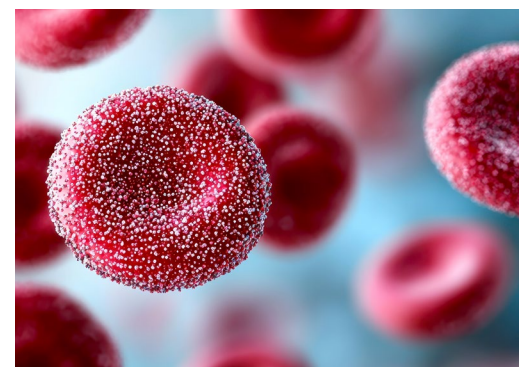
Reaction system

- Grated photometer with 16 wavelengths for a maintenance free operation
- Wide photometric linearity up to 3.5 OD to minimize the need of reruns
- Maintenance free thermostatzation of cuvettes by contact heating (metal block)
- Twin test functionality for DiaSys HbA1c   FS



Advanced HbA1c testing

- Fully automated on board hemolysis of whole blood samples to eliminate time consuming and error prone manual steps
- HbA1c smart sampling
 - Sampling at bottom of tube for a sufficient aspiration of erythrocytes for HbA1c determination
 - Deep washing of sample probe to minimize carry over after whole blood sampling



Performance data (preliminary)

Outstanding precision and excellent recovery of serum based controls TruLab N and TruLab P.

Parameter	Unit	Sample value	CV [%]*	Recovery of controls [%]**	
				TruLab N	TruLab P
ALAT	U/L	50.4	1.51	103	101
CHOL	mg/dL	138	0.98	101	95.6
CREA PAP	mg/dL	1.30	0.50	99.9	98.8
GGT	U/L	31.4	2.21	97.2	101
HDL-c direct	mg/dL	58.2	0.39	100	103
LDL-c direct	mg/dL	102	0.94	99.3	101
Lipase	U/L	59.0	0.62	96.9	96.5
Lp(a)	nmol/L	38.4	1.13	94.0	95.4
TP	g/dL	6.14	0.87	98.4	99.5
TRIG	mg/dL	82.9	1.15	95.2	96.7
UREA	mg/dL	44.4	0.50	99.5	96.7

* n=20, ** n=5

Reagent rotor

- Refrigerated reagent rotor (2-8°C)
- On board capacity of up to 37 DiaSys respons[®] reagent bottles
- Convenient one grip loading of respons[®] bottles also for two component reagents to eliminate the risk of misplacements
- Barcoded bottles – automatic connection to pre-programmed applications
- Continuous reagent loading while running of analyzer



Automation

- Integrated rack loader offering continuous sample loading
- 120 sample positions, thereof up to 30 STAT positions
- Long walk away time
- Intelligent rerun and smart dilution function
- Flex testing
- Wake up time 10 minutes (start time programmable)
- HIL sample management
- Integrated ISE with extraordinary onboard stability of up to nine months



Technical specifications	
Throughput	600 tests/hour (with ISE 800 tests/hour)
Sample types	Serum, plasma, urine, whole blood
Sample volume	1.5-45 µL, 0.1 µL steps
Sample probe	Liquid level detection, clot detection and collision protection
Reagent pipetting	10-200 µL, 0.5 µL steps
Reagent probe	Liquid level detection, bubble detection and collision protection
STAT-analytics	Yes, 3 racks
Ion measurement	Integrated ISE (Na, K, Cl)
Barcode identification	Sample, reagent
Sample tray	120 samples by 12 racks
Reagent on board capacity	37 respons [®] containers cooled to 2-8°C
Reaction unit	124 cuvettes, 8-step auto-washing
Photometry	Grating system, 16 wavelengths (340, 380, 412, 450, 480, 505, 546, 570, 605, 630, 660, 700, 740, 770, 800 and 850)
Photometric linearity	0-3.5 OD
Water consumption	< 25 liters per hour
Dimensions	138 cm (W) x 86 cm (D) x 120 cm (H)
Weight	approx. 350 kg



Handed out by:

DiaSys
Diagnostic Systems GmbH
 Alte Strasse 9
 65558 Holzheim
 Germany

Phone: +49(0)64 32/91 46-0
 Fax: +49(0)64 32/91 46-32
 E-Mail: info@diasys.de
www.diasys-diagnostics.com



natureOffice.com/DE-626-YYXHM2T